

BAMEQ SRL



2013

GENERAL DATA

- Name BADINOTTI MARINE EQUIPMENT (BAMEQ) Srl
- Headquarter Via Ortles, 5 – I-20139 – Milan (MI) – Italy
- Shipyard Via Fornaci, 16–25040 - Colombaro di Cortefranca (BS)
- VAT Code 08171090965
- Tel./Fax +39-025391070/+39-0256816918
- E-mail bameq@badinotti.com
- Web site www.badinotti.com

INDEX

- Profile
- Mission
- Structure
- References
- Know-how
- HPDE (High Density PolyEthilene)
- Products
- Photo-gallery



PROFILE

It is very hard and ambitious to propose a new and really innovative project in the Italian marine market mainly because of its ancient and well developed tradition in terms of shipyard and the technologies know-how. Sometime it is just this kind of challenge that succeeds in improving the entrepreneurial capability and allows to translate it in a successful project, simply starting from basic technical features, rightly selected and integrated one each other, which provide high performance solutions and products.

BAMEQ Srl is a Badinotti Group Company, an international Holding involved in Aquaculture and Fishery since more than 100 years. It will be able to improve the Group experience, with its technical and market skills regarding the specific nautic field and other related industrial high-tech ones, where it always needs to find new and effective solutions to upgrade the working production processes and their efficiency for the best competition.

BAMEQ Srl bases its know-how on the skills belonging to its own managing staff which came out from another company with high level experiences in the industrial field and particularly in the marine one, not working anymore. This staff has been able to develop and transfer, within few years, really advanced technical solutions from other industrial fields to the marine one, allowing to evaluate specific inquiries and to find and propose everytime, customized solutions too.



MISSION

BAMEQ Srl wants mainly to act in Marine-coast monitoring, Rescue, Diving, Acquaculture and Fishery fields.

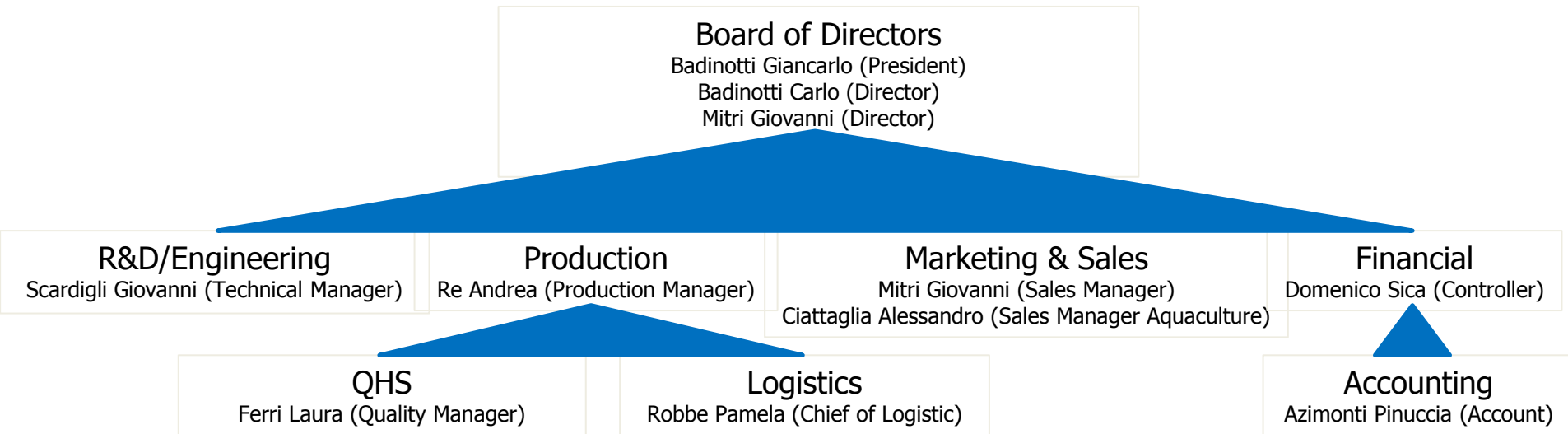
BAMEQ Srl aims then to represent a reference company in the mentioned market as manufacturer of marine professional equipment, taking care each working phase in order to reach high quality products, just starting from its design, its material selection and procurement, its manufacturing processes, and last but not least, up to its after-sale assistance.

Despite to the wide range of the offer about leisure products in the marine Italian field, due to its well known style and design, to its geographic position and to the consequent natural tourism calling, there are only few specialized companies that are able to supply small craft work boats for professional applications. Furthermore, the heavy-duty proposals are often carried out simply from previous leisure products that are then adjusted for the specific duty; it means that it doesn't fully satisfy the customer requirements.

BAMEQ Srl relevant skill mainly concerns HDPE (High Density PolyEthylene) customized marine products and their specific manufacturing processes based on manual procedures which don't require any mould, allowing then to modify a single piece too even while its construction. Bameq Srl has then both a standard production and the possibility to supply customized means.

Our products are: boats, modular pontoons, lighting buoys, mooring buoys, monitoring buoys, fishfarming cages .

STRUCTURE



REFERENCES

- B & B Diving (Design and supply of a customized HDPE diving boat – 7,30m length - Italy)
- Aqua Srl Itticoltura off-shore (Design and supply of a customized boat – 5,30m length – for fish load - off shore aquaculture plant - Italy)
- SSS Snc Lavori marittimi e Protezione civile (Design and supply of two HDPE customized work boats: a 4,50m length for marine jobs and a 7,30m length for diving jobs - Italy)
- Farotech Srl Servizi off-shore per Oil & Gas (Supply of a 5,30m length HDPE work boat with two diesel outboard engines for activities on an off-shore Exxon-Mobil plant - Nigeria)
- CFS Corpo Forestale dello Stato (Supply of one HDPE work boat – 7,30m length – coast survey - Italy)
- Mareaperto Srl Itticoltura off-shore (Design and supply of one HDPE work boat 8,30m length for jobs on an off-shore aquaculture plant - Italy)
- Coop S.Vito Allevamenti ittici in laguna (Design and supply of a modular work pontoon – 20m x 10m – Italy)
- Drafinsub (Supply of one HDPE work boat 7,30m length for professional divers – Italy)
- Mahaba diving (Design of a 9,30m length HDPE boat for diving - Italy)
- Autorità Portuale La Spezia (Design and supply of nr.10 buoys for selected rubbish collection in the sea - Italy)
- Consorzio del Lario (Supply of nr.11 emergency mooring buoys- Italy)

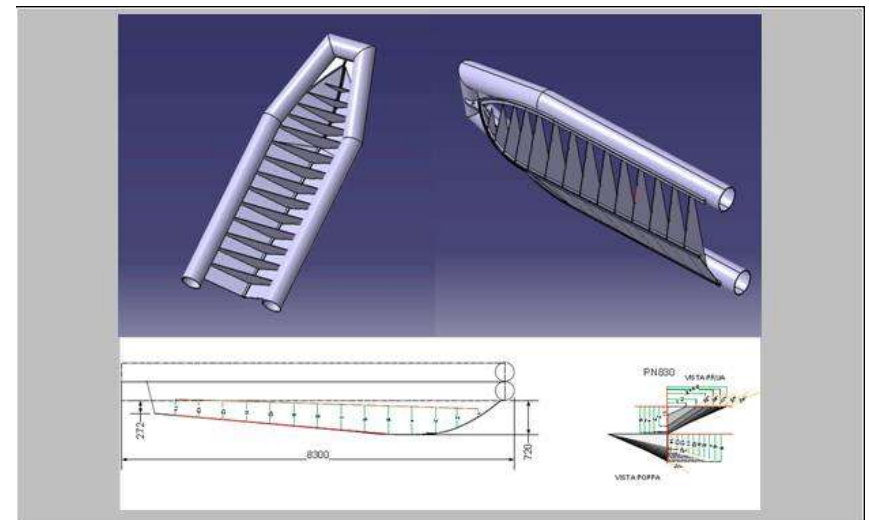
Note:

The above reference-list and the following pictures included in this presentation are referred to some main projects dealt by the BAMEQ's managing staff, during its activity with another specialized company which is not working anymore and whose rights have been transferred to BAMEQ Srl itself which has been just established ON FEBRUARY 2013.

KNOW-HOW

Design and manufacture of customized products involve special skills coming out from several years of experience in the typical field of work. Bameq Srl has a technical Dept. with naval engineers and special SW tools that allow to evaluate the specific customers inquiries and propose the best solutions after a feasibility study. The design phase, which involves hydrodynamic and structural calculations, foresees the boat-hull shape definition through the boat-framework final drawings carry-ouy. As our manufacture procedures are similar to the ones related to the ancient woodmade boats, we start the production through a first step which is the cut of HDPE sheets, based on the above mentioned drawings. It proceeds with the cutted HDPE components assembly and their welding with a special blowing-heating machine, in order to obtain a solid boat framework. This one is then welded together with the HDPE pipes which are previousy filled in with an expanding foam.

Many and different check-outs are performed for verifying impact resistance and waterproof of the assembled structure. As already told, we don't need any mould for the boat manufacture and, for this reason, we can offer the opportunity for changing and modifying the product structure even during its construction.



HDPE

HDPE is a thermoplastic material for heavyduty applications: water and gas pipelines and other specific ones for hydrocarbons, are usually made of PE.

We use HDPE as a basic structural material for our products construction because of its high impact resistance, its lack of osmosis, typical, for instance, of the woodmade means, also it is fully reciclable and its high density structure often avoid to treat the boat hull with anti-fouling products avoiding then the environmental pollution.

Furthermore it grants to our products a long-time life with respect to other equivalent ones, made by other materials such as wood, fiberglass, iron etc. HDPE also result in reducing the maintenance on our means, saving then its related costs.

Here below we want to show a comparative schedule between some structural materials used by manufactures for the professional boats construction; inside there are highlighted their main technical requirements.

| Requirement | Fiberglass | Aluminium | HDPE |
|----------------------------|-------------------|------------------|-------------|
| Impact resistance | Low | Medium | High |
| Resistance vs abrasion | Low | Low | High |
| UV resistance | Low | High | High |
| Maintenance | High | Medium | Low |
| Repairing difficulties | High | Medium | Low |
| Resistance vs rock landing | Low | Low | High |
| Marine pollution impact | High | Medium | Low |

PRODUCTS

| PROFESSIONAL BOATS | | MARINE EQUIPMENT | | SPECIAL PROJECTS |
|--------------------------------------|-------------------------------------|------------------|-----------------|--|
| BLUE-LINE | GOLD-LINE | BUOYS | PONTOONS | <p>Customized products are carried out by BAMEQ Srl based on the customer requirements and on the specific applications</p> |
| BMQ-450 | BMQ730 | BMQ-EMR1 | BMQ-T600 | |
| BMQ530 | BMQ1100 | BMQ-DSP1 | | |
| BMQ730 | | | | |
| BMQ830 | | | | |
| BMQ930 | | | | |
| Basic equipment for general purposes | Top equipment for specific purposes | | | |

BOATS can be also supplied with certifications relevant to a specific work use

BMQ450



MAIN TECHNICAL DATA

| |
|--|
| HDPE (High Density PolyEthylene) boat – BLUE LINE |
| Double HDPE overlapped wall pipe DN315 (the lower one filled with expanded foam) |
| Self draining deck |
| High navigation stability |
| High impact resistance |
| Unsinkable |
| No maintenance needed on the basic HDPE Structure |

SPECIFIC TECHNICAL DATA

| | |
|--------------------|-----------|
| Lenght | 4,50m |
| Width | 2,10m |
| Weight | 440Kg |
| Capacity | 800Kg |
| People | 6 |
| Engine (max power) | 75hp/55kW |
| Speed | 15Knots |
| Certification | CE |
| Design class | C |

STANDARD EQUIPMENT

| |
|--|
| No. 1 storage space at bow |
| No. 1 seat at stern with one storage space |
| No. 3 lifting points |
| No. 4 bollards |
| No. 1 electric bilge pump and e no. 1 manual one |
| Outside rope |
| Anti-skid deck cover |

BMQ530



MAIN TECHNICAL DATA

| |
|--|
| HDPE (High Density PolyEthylene) boat – BLUE LINE |
| Double HDPE overlapped wall pipe DN315 (the lower one filled with expanded foam) |
| Self draining deck |
| High navigation stability |
| High impact resistance |
| Unsinkable |
| No maintenance needed on the basic HDPE Structure |

SPECIFIC TECHNICAL DATA

| | |
|--------------------|-------------|
| Lenght | 5,30m |
| Width | 2,16m |
| Weight | 550Kg |
| Capacity | 1000Kg |
| People | 8 |
| Engine (max power) | 136hp/100kW |
| Speed | 15Knots |
| Certification | CE |
| Design class | C |

STANDARD EQUIPMENT

| |
|--|
| No. 1 storage space at bow |
| No. 1 seat at stern with one storage space |
| No. 3 lifting points |
| No. 4 bollards |
| No. 1 electric bilge pump and e no. 1 manual one |
| Outside rope |
| Anti-skid deck cover |

BMQ730



MAIN TECHNICAL DATA

| |
|--|
| HDPE (High Density PolyEthylene) boat – BLUE LINE |
| Double HDPE overlapped wall pipe DN315 (the lower one filled with expanded foam) |
| Self draining deck |
| High navigation stability |
| High impact resistance |
| Unsinkable |
| No maintenance needed on the basic HDPE Structure |

SPECIFIC TECHNICAL DATA

| | |
|--------------------|-------------|
| Lenght | 7,30m |
| Width | 2,52m |
| Weight | 1100Kg |
| Capacity | 2200Kg |
| People | 22 |
| Engine (max power) | 270hp/200kW |
| Speed | 24Knots |
| Certification | CE |
| Design class | C |

STANDARD EQUIPMENT

| |
|--|
| No. 1 steering console |
| No. 1 storage space at bow |
| No. 1 seat at stern with one storage space |
| No. 3 lifting points |
| No. 4 bollards |
| No. 1 electric bilge pump and e no. 1 manual one |
| Navigation lights |
| Outside rope |
| Anti-skid deck cover |

BMQ830



MAIN TECHNICAL DATA

| |
|--|
| HDPE (High Density PolyEthylene) boat – BLUE LINE |
| Double HDPE overlapped wall pipe DN315 (the lower one filled with expanded foam) |
| High load capacity |
| High navigation stability |
| High impact resistance |
| Unsinkable |
| No maintenance needed on the basic HDPE Structure |

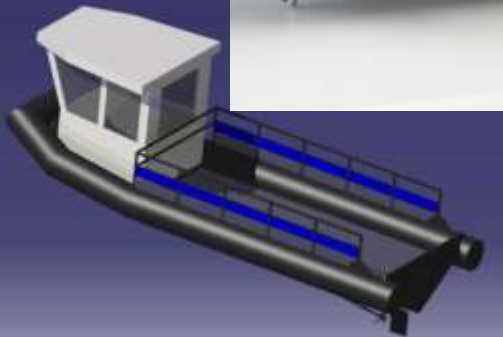
SPECIFIC TECHNICAL DATA

| | |
|--------------------|-------------|
| Lenght | 8,30m |
| Width | 2,90m |
| Weight | 1400Kg |
| Capacity | 2500Kg |
| People | 22 |
| Engine (max power) | 200hp/150kW |
| Speed | 15Knots |
| Certification | CE |
| Design class | C |

STANDARD EQUIPMENT

| |
|--|
| No. 1 steering console |
| No. 1 storage space at bow |
| No. 1 seat at stern with one storage space |
| No. 3 lifting points |
| No. 4 bollards |
| No. 1 electric bilge pump and e no. 1 manual one |
| Navigation lights |
| Outside rope |
| Anti-skid deck cover |

BMQ930



MAIN TECHNICAL DATA

HDPE (High Density PolyEthylene) boat - **BLUE LINE**

Double HDPE overlapped wall pipe DN315 (the lower one filled with expanded foam)

Self draining deck

High navigation stability

High impact resistance

Unsinkable

No maintenance needed on the basic HDPE Structure

SPECIFIC TECHNICAL DATA

| | |
|--------------------|-------------|
| Lenght | 9,30m |
| Width | 3,50m |
| Weight | 3600Kg |
| Capacity | 3500Kg |
| People | 22 |
| Engine (max power) | 400hp/294kW |
| Speed | 15Knots |
| Certification | CE |
| Design class | C |

STANDARD EQUIPMENT

No. 1 cabin with steering console and a wide storage space

No. 1 storage space at bow

No. 1 seat at stern with one storage space

Deck can be equipped for divers or with storage tanks for feeding products for aquaculture applications

No. 4 lifting points

No. 6 bollards

No. 1 electric bilge pump and e no. 1 manual one

Outside rope

Anti-skid deck cover

BMQ1100



MAIN TECHNICAL DATA

HDPE (High Density PolyEthylene) boat – **GOLD LINE**

Double HDPE overlapped wall pipe DN315 (the lower one filled with expanded foam)

Self draining deck

High navigation stability

High impact resistance

Unsinkable

No maintenance needed on the basic HDPE Structure

SPECIFIC TECHNICAL DATA

| | |
|--------------------|-------------|
| Lenght | 10,90m |
| Width | 3,50m |
| Weight | 5500Kg |
| Capacity | 3500Kg |
| People | 28 |
| Engine (max power) | 500hp/368kW |
| Speed | 30Knots |
| Certification | CE |
| Design class | C/B |

STANDARD EQUIPMENT

No. 1 cabin with steering console, a wide storage space and WC

No. 1 rising platform at stern for divers with no.2 folding ladders

No. 1 storage space at bow

No. 1 seat (12 places) along the deck with supports for diving cylinders

No. 4 lifting points

No. 6 bollards

No. 2 fuel tanks (600Lt/each)

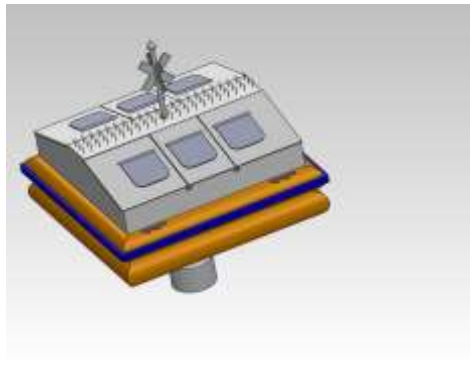
No.1 water tank (150Lt)

No. 1 electric bilge pump and e no. 1 manual one

Outside rope

Anti-skid deck cover

BMQ-DSP1



MAIN TECHNICAL DATA

Selected disposal recovering buoy

HDPE floating structure with pipes

A (3m height / 4" diam) galvanized iron post for pay-load and mooring connections

Liquid dust holder

Safety locking device

Unsinkable

No maintenance needed on the basic HDPE bouy structure

SPECIFIC TECHNICAL DATA

| | |
|--------------------------|--------------|
| Floating structure shape | Square |
| Diameter | (2,45x2,45)m |
| Total height | 3,00m |
| Weight | 500Kg ca |
| Floatation | 800Kg ca |

STANDARD EQUIPMENT

No. 6 HDPE dustbins (110Lt/each) for selected disposal

Mooring systems with concrete bodies and chain (not included)

Manual lock ad unlock device

Bollards

Outside fenders all around

Solar lights

Anti-birds devices

BMQ-EMR1



MAIN TECHNICAL DATA

Emergency mooring buoy

HDPE floating structure (fully handmade)

A (200mm diam) galvanized iron post for pay-load and mooring connections

Unsinkable

No maintenance needed on the basic HDPE bouy structure

SPECIFIC TECHNICAL DATA

| | |
|------------------------|-----------|
| Floating body shape | Cilindric |
| Floating body diameter | 1,45m |
| Total height | 5,60m |
| Weight | 200Kg ca |
| Floatation | 1500Kg ca |

STANDARD EQUIPMENT

Radar mirror

Bollards

Outside fenders all around

Solar light

Anti-birds devices

BMQ-T600



MAIN TECHNICAL DATA

Modular (No 12 modules) not powered pontoon

HDPE floating structure with DN560 pipes

Galvanized iron frame and working surface

Low maintenance on the floating structure

PONTOON TECHNICAL DATA

| | |
|----------|------------|
| Lenght | 19,28m |
| width | 9,36m |
| Height | 0,78m |
| Weight | 17000Kg ca |
| Capacity | 36000Kg ca |

SINGLE MODULE TECHNICAL DATA

| | |
|----------|-------------------------|
| Lenght | 6,00m |
| Width | 2,40m |
| Height | 0,78m |
| Weight | 1400Kg ca |
| Capacity | 200Kg/m ² ca |

STANDARD EQUIPMENT

Mooring system with no. 4 towers where are installed one moving post each one (iron structured)

Bollards

Outside fenders all around

Solar lights

Iron steel cabled handrail

Self draining galvanized iron greeds

PHOTO GALLERY



PHOTO GALLERY

